

# MnSEIA 2019 Solar Gateway

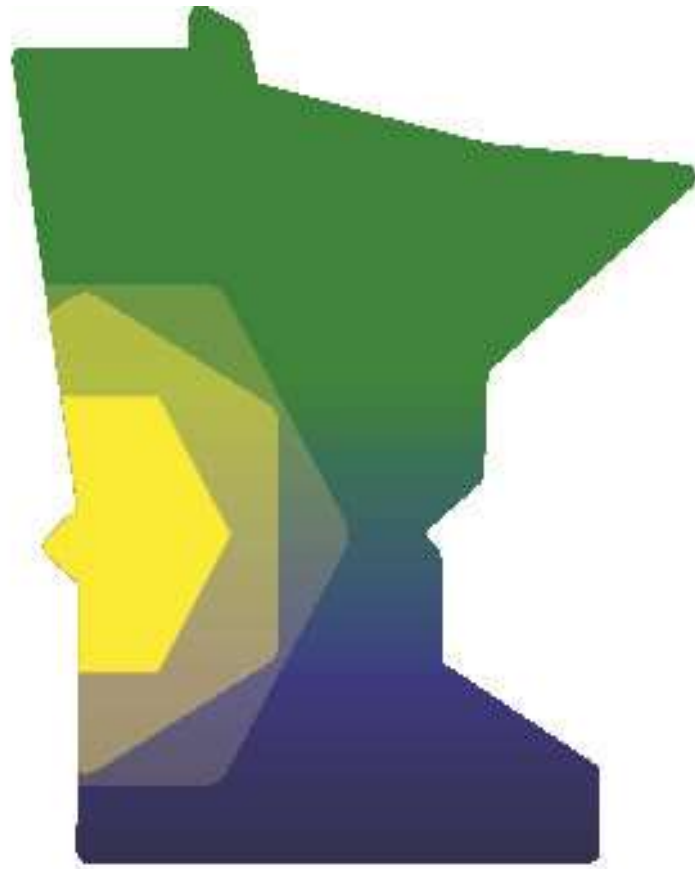
“Minnesota Brightfields: A Template for Solar Development on Closed Landfills.”

Cameran J. Bailey,  
Solar Planning Advisor

October 21, 2019

Source: <http://solar.mnseia.com/2019/10/>





**MnSEIA**

# MN Solar Pathways Study and the MN Brightfields Initiative



# MN Solar Pathways Study and the MN Brightfields Initiative



## Project Partners & Participants



# Legislation passed in 2019 and EQB study status

## M.L. 2019 SS Ch 4: Art. 1, Sec. 1, subd 9b

(b) \$300,000 the first year is from the remediation fund to conduct a study of the potential to deploy solar photovoltaic devices on closed landfill program sites. The report must include:

- (1) identification and assessment of properties in the closed landfill program with the highest potential for solar energy production;
- (2) identification of potential barriers to solar energy production and potential ways to address those barriers;
- (3) policy recommendations that would facilitate solar energy production on closed landfill program sites in a manner that would contribute to state and local government sustainability goals.

## Timeline

October 16, 2019 – Approval of project work plan by EQB

June 2020 – All analysis work completed

June 2020 – November 2020 – Write EQB report

December 1, 2020 – Final report sent to legislature

Brightfield Projects are spreading across the nation.



Solar Builder  
2018 Gold  
Project of the  
Year:  
Cuyahoga  
County (Ohio)  
Landfill

# Brightfield Projects are spreading across the nation.

## Eau Claire Community Solar Garden

Eau Claire Community Solar Garden



The 1 megawatt (MW) Solar Connect Community solar garden in Eau Claire began generating power in late October 2017. The more than 3,000 solar panels are located on a city-owned abandoned landfill. Xcel hired Pristine Sun as the solar-developer. Over 90 percent of both the Eau Claire and La Crosse community solar gardens are subscribed. This was the first of Xcel's three planned 1 MW community solar gardens. The others will serve La Crosse in 2018, and Ashland in 2019. Unlike the fixed arrays, Ashland's solar garden will host a single-axis tracking system to improve solar capture.

Eau Claire, WI 10-2017

Photo courtesy of: PJ Nelson (CC BY-SA)

## Solar Farm to Outshine Closed Local Landfill

October 17, 2019 Max Freebern News 0

## Old landfill in Maryland transformed into state's first large-scale community solar farm

BY ARIS FOLLEY - 10/16/19 01:59 PM EDT

81 COMMENTS

## From pollution cleanup site to clean-energy generator

Solar-power installation coming next year to one of DePue's 2 Superfund locations

By Kim Shute

Oct. 12, 2019

## Permitting begins for solar array at capped landfill in Amherst

By SCOTT MERZBACH

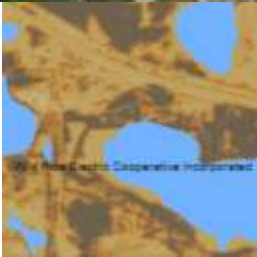
Staff Writer

Published: 10/8/2019 4:31:35 PM

We have MN Communities amenable to this development right now.



**Becker County:**  
47 - 90 acres



**City of Albert Lea:** 60 - 170 acres

**City of Duluth:** 471 acres





We have MN Communities amenable to this development right now.



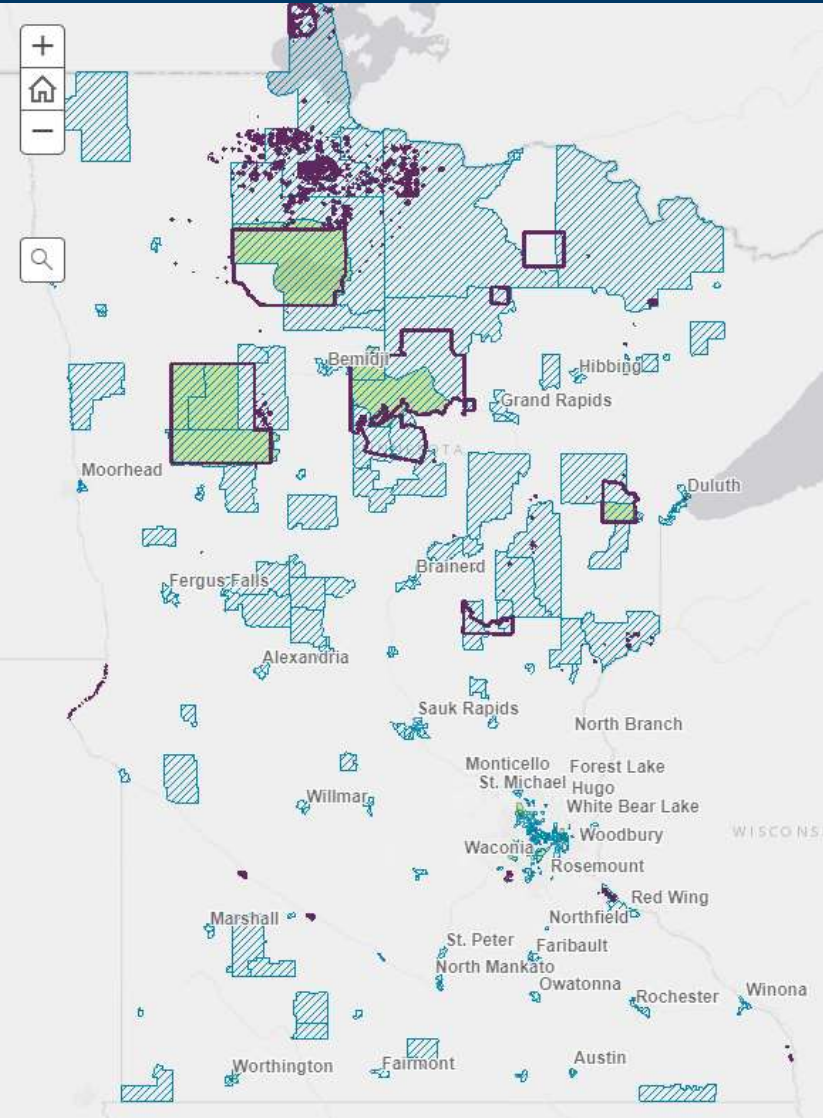
**City of Ramsey: 235 acres**

**City of Eden Prairie: 235 acres**

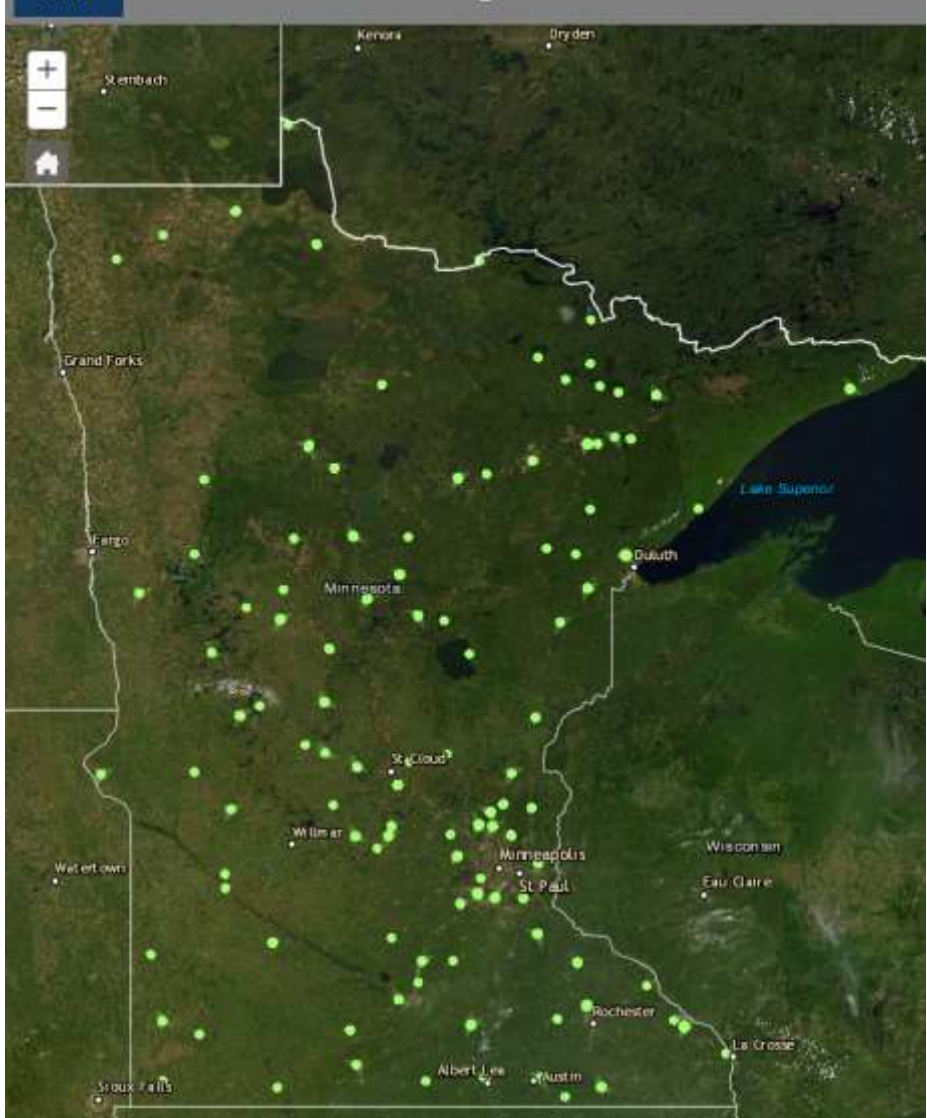


Brightfields lend themselves to support economic, social and environmental needs.

### Understanding environmental justice in Minnesota



### Closed Landfill Program sites



### Thrive: Outcomes

Stewardship



Prosperity



Equity



Livability



Sustainability



# Next Steps of the MN Brightfields Initiative

**STAY IN THE KNOW:  
BRIGHTFIELD EVENTS**

Summer 2019- Dec 2020 • Solar on Closed Landfill Study

Fall 2019 • CDFA Report Release

Oct 21-22, 2019 • MnSEIA Gateway Conference

Early Feb 2020 • Brownfield Listings Market Mixer

Oct 2020 • MnSEIA Gateway Conference

Oct 2020 • Brownfield Listings Market Mixer



December 1, 2020: Final report sent to legislature



**BROWNFIELD LISTINGS**

Lisle, IL

**Unique Chicagoland Development Opportunity**

Co-development opportunity for quasi-retail use to generate sales tax, which require by the city on this extremely-highly visibility Chicagoland site. See brochure below and attached.

NAI Hiffman

Status: Productive Use

Conditions:

**If you want to see a Brightfield in your community, we recommend contacting the following partners:**

- Clean Energy Resource Teams
  - SolSmart
  - MN Brownfields
  - MN GreenStep Cities
- MN Department of Commerce