

## MN BRIGHTFIELDS INITIATIVE

### DITCH THE DIRT TIME TO SHINE

A brightfield is "an abandoned or contaminated property" - such as a landfill - "that is redeveloped through the incorporation of solar energy." (US Dept of Energy) It's simple really: put solar farms on otherwise-unusable land.

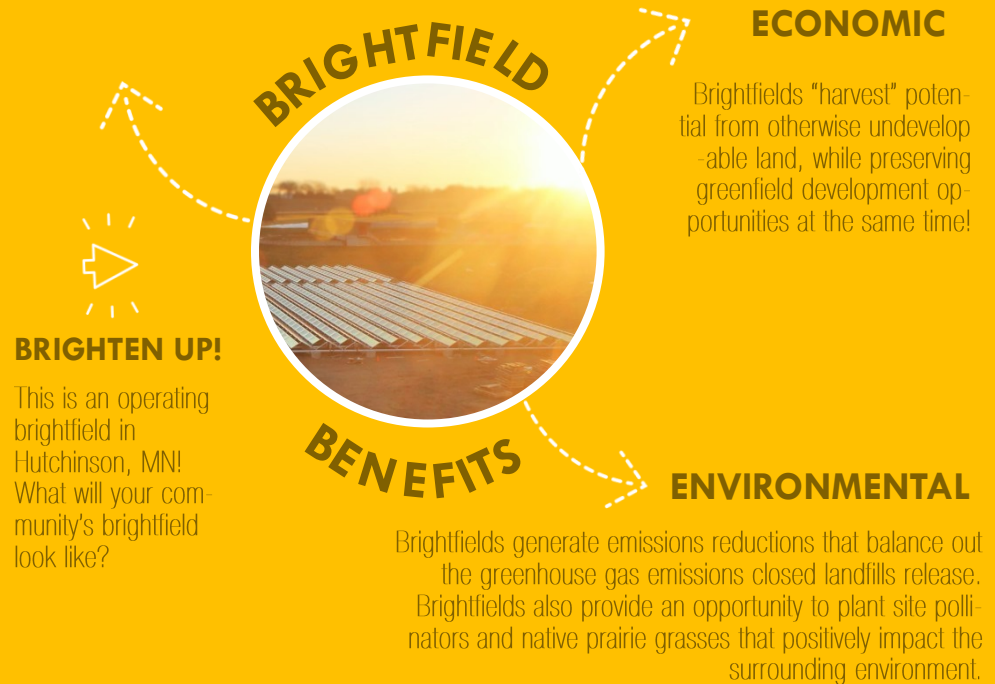
The initiative is a cross-sector collective of local, regional, and national solar energy professionals. It provides cost-free professional, technical, financial, and regulatory expertise to local governments in Minnesota to assist in the development of solar PV projects on Minnesota's closed landfills.



The graphic at the top of this page maps the approximate locations of 104 of the 110+ closed landfills across the state of Minnesota - potential brightfields!

### SOCIAL

Workforce development, health improvements, educational and recreational possibilities, and low-income energy assistance are all opportunities when a community adopts a brightfield!



### DIGGING INTO THE DETAILS

In 2019, the Minnesota Environmental Quality Board (EQB) was given a one-time appropriation from the Minnesota Pollution Control Agency's (PCA) remediation fund to conduct the MN Solar on Closed Landfills Study. This interagency, statewide study will determine the potential for developing solar energy on 110+ closed landfills across Minnesota. By December 1<sup>st</sup>, 2020, the EQB and state agencies will "report on the use of properties in the state's closed landfill program for solar energy production. The report must include:

1. identification and assessment of properties in the closed landfill program with the highest potential for solar energy production;
2. identification of potential barriers to solar energy production and potential ways to address those barriers; and
3. policy recommendations that would facilitate solar energy production on closed landfill program sites in a manner that would contribute to state and local government sustainability goals."

# CITY OF RAMSEY



Before conducting the statewide study, a single-site case study on the City of Ramsey's Anoka-Ramsey Closed Landfill was completed by the City of Ramsey, the Council of Development Finance Agencies (CDFA), and the Metropolitan Council. This collaborative effort was then used to inform the scope of the statewide study and to develop a replicable model for implementing Brightfields across Minnesota.

The site is in the southeastern quadrant of the City of Ramsey. It is bordered by Alpine Park to the north, Sunfish Lake & Park to the east, active light commercial, light industrial, and "multi-optional development" land uses to the south, and light single-family residential to the west.

## IMPLEMENTATION

### SMALL-SCALE



12 ACRES



\$3.5-4M



1-1.5 YEARS

### MEDIUM-SCALE



56 ACRES



\$19M



2-3 YEARS

### LARGE-SCALE



110 ACRES



\$35M



3-5 YEARS



## POTENTIAL



2 MEGAWATTS



350 HOMES  
POWERED FOR ONE YEAR



\$315K SAVED  
FOR HOMES POWERED  
FOR ONE YEAR



10 MEGAWATTS



1,530 HOMES  
POWERED FOR ONE YEAR



\$1.35M SAVED  
FOR HOMES POWERED  
FOR ONE YEAR



20 MEGAWATTS



3,100 HOMES  
POWERED FOR ONE YEAR



\$2.7M SAVED  
FOR HOMES POWERED  
FOR ONE YEAR

## HOW ABOUT YOU?

If you want to see a Brightfield in your community, we recommend contacting the following partners:

- [Clean Energy Resource Teams \(CERTs\)](#)
- [MN GreenStop Cities](#)
- [SolSmart](#)
- [MN Department of Commerce](#)
- [MN Brownfields](#)

## STAY IN THE KNOW: BRIGHTFIELD EVENTS



## INITIATIVE PARTNERS

