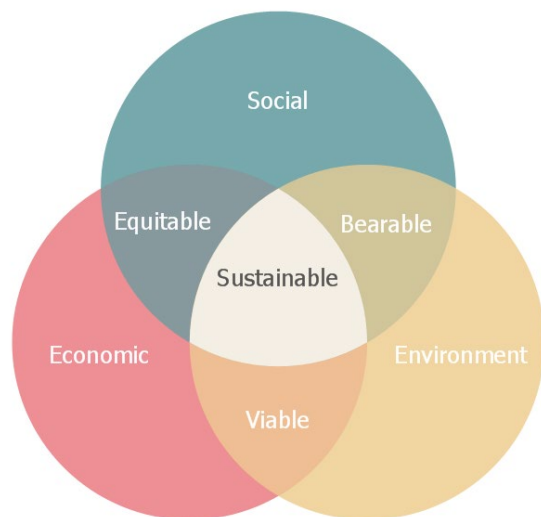




Sustainability and Resiliency Update: City of Rochester



Sustainability Team



Cindy Steinhauser
Community Development Director



Kevin Bright
Energy & Sustainability Director

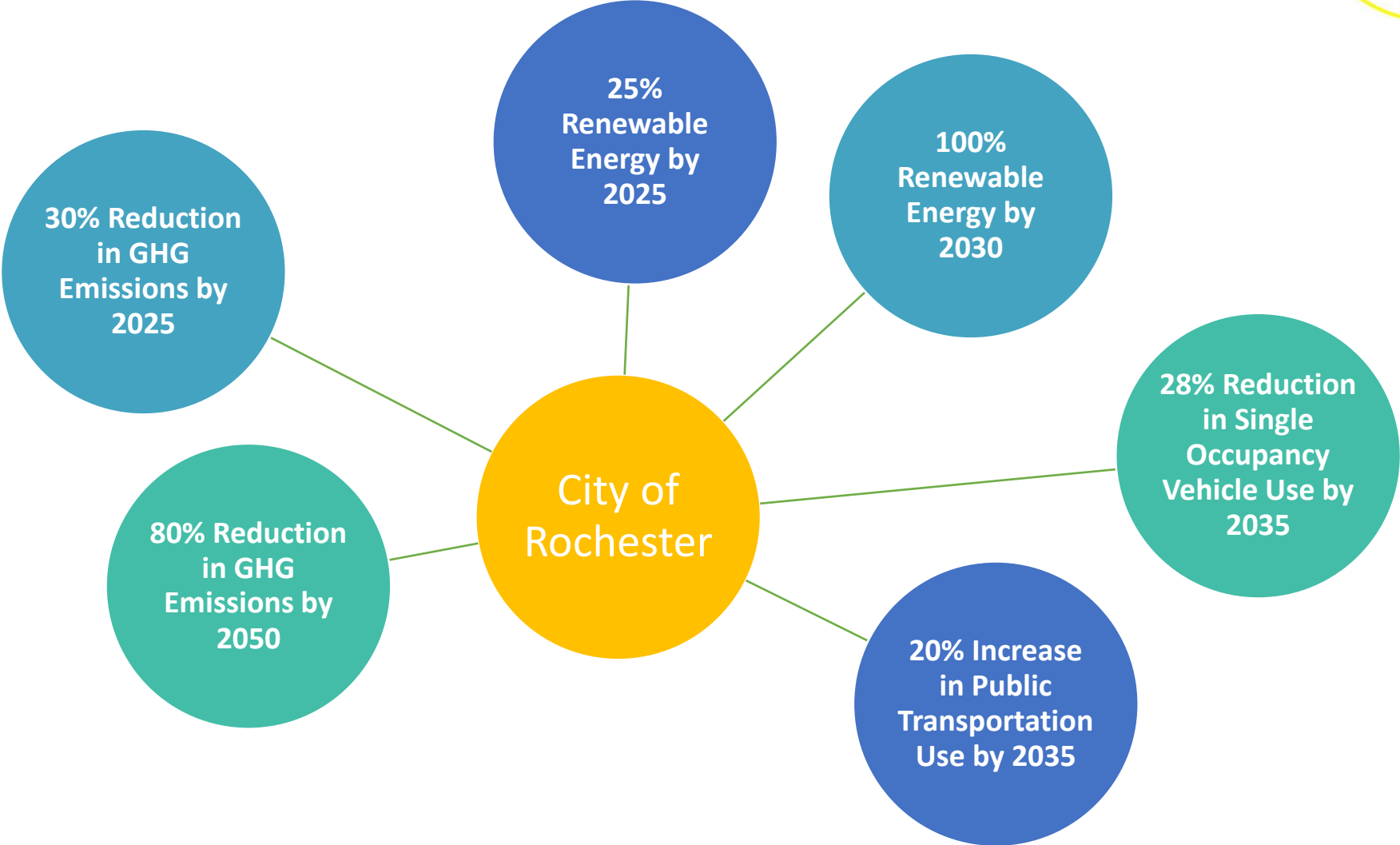


Lauren Jensen
Sustainability Coordinator



Siletselwe Dlamini
Sustainability Intern

Adopted Sustainability Goals

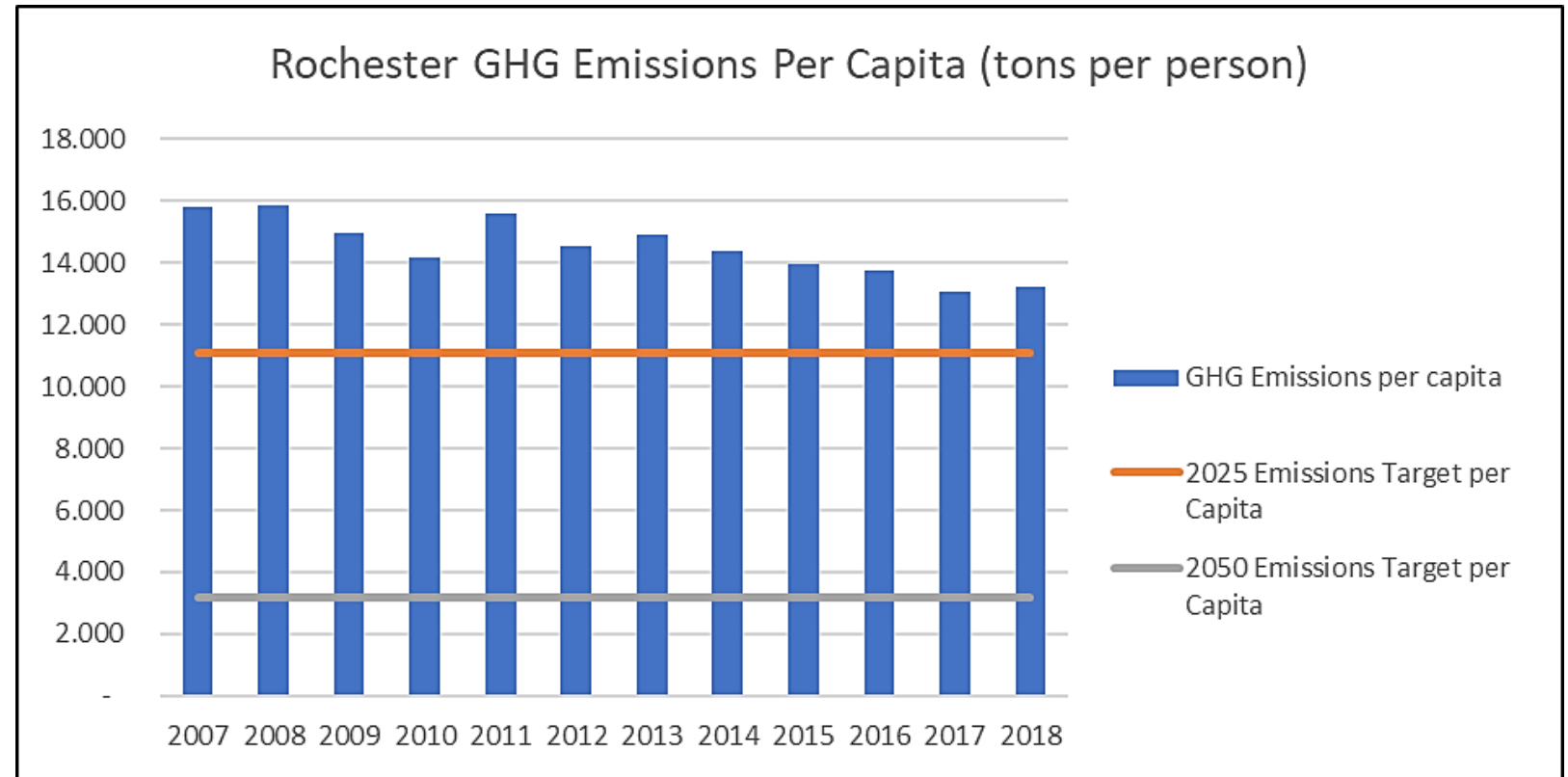


Progress to Date



Goals

- ▶ 1.5% annual retail energy savings
- ▶ 25% renewable energy by 2025
- ▶ GHG emissions reductions of:
 - 15% by 2015
 - 30% by 2025
 - 80% by 2050



*Includes travel, waste and energy emissions

▶ **16% reduction in GHG emissions since 2007**

▶ **22% reduction in energy emissions since 2007**

Rochester Comprehensive Plan

- 1. Limits sprawl
- 2. Prioritizes areas for development
- 3. Informs public transit investment

Transportation Planning

- 1. Public Transit Update (2020)
- 2. Downtown Mobility Plan
- 3. Micromobility investment

Power and Utility Planning

- 1. Municipal Utility (RPU) 100% renewable by 2030
- 2. District Energy Planning for Downtown

Development

- 1. Sustainable Building Policy for Projects receiving public support
- 2. Transit Oriented Development Zoning
- 3. R2x Zoning

Existing Buildings

- 1. Benchmark program (voluntary)
- 2. Efficiency Program and targets (City, Mayo, others)

Sustainability Outcomes

(environmental, social equity, financial)

Sustainable, Resilient Rochester



Sustainable, Resilient Rochester

Creating Economic, Environmental, & Social Health

Policy Leadership

Foundational Principles:

- Fiscal Responsibility & Sustainability
- Environmental Stewardship
- Social Equity



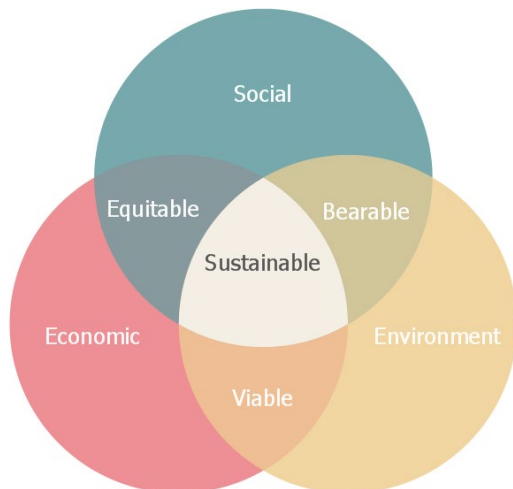
Organizational Leadership

- Green Procurement
- Transportation & Fleet
- Waste Management
- Integrated Pest Management & Landscaping
- Energy
- GHG Emissions Reductions

Community Leadership

Sustainability Committee:

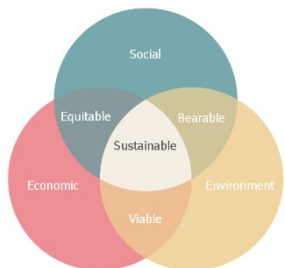
- Energy Action Plan
- Community Sustainability & Resiliency Action Plan
- District Energy
- Community Partnerships



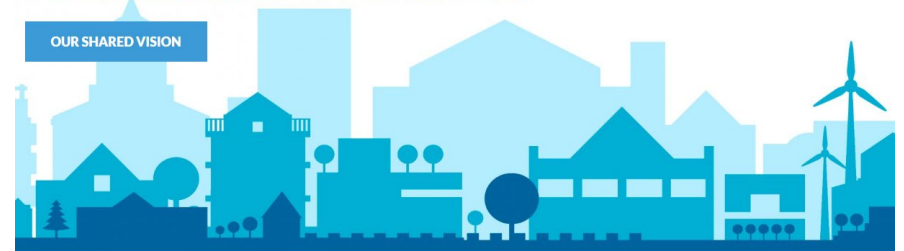
Policy Leadership



- ▶ **GreenStep Cities Program**
 - **ClimateSmart Municipalities**
- ▶ **Sustainable States Network**
 - **Community Energy Challenge**
- ▶ **Sustainable Buildings and Step Code**
- ▶ **1st LEED Gold City in MN**
- ▶ **100% Renewable Target by 2030**



SUSTAINABLE STATES NETWORK



Organizational Leadership



▶ Green Team

- ▶ Waste
- ▶ Procurement
- ▶ Transportation & Fleet
- ▶ Energy
- ▶ GHG Emissions
- ▶ Integrated Pest Management & Landscaping

▶ LED Street Lights

▶ Downtown District Energy System



Minnesota's waste hierarchy

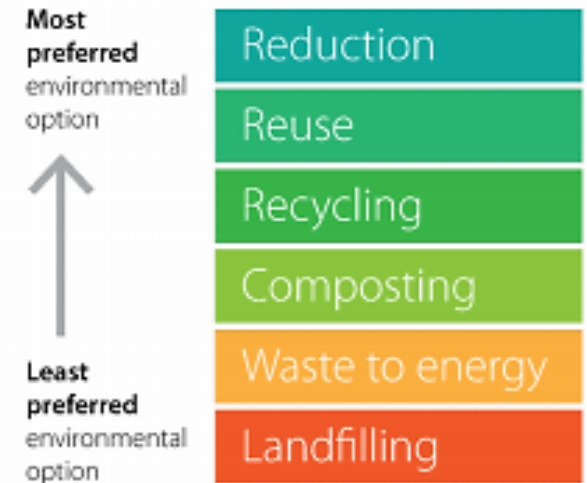
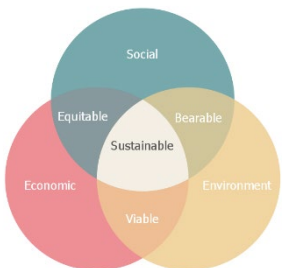


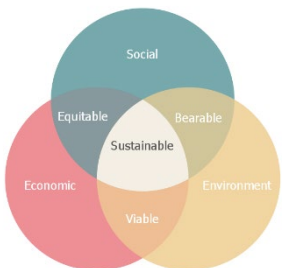
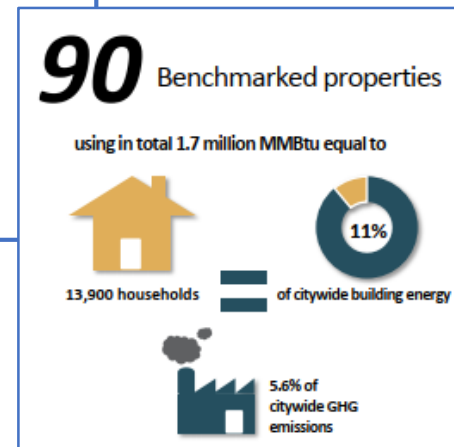
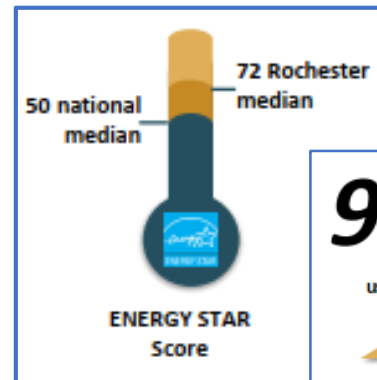
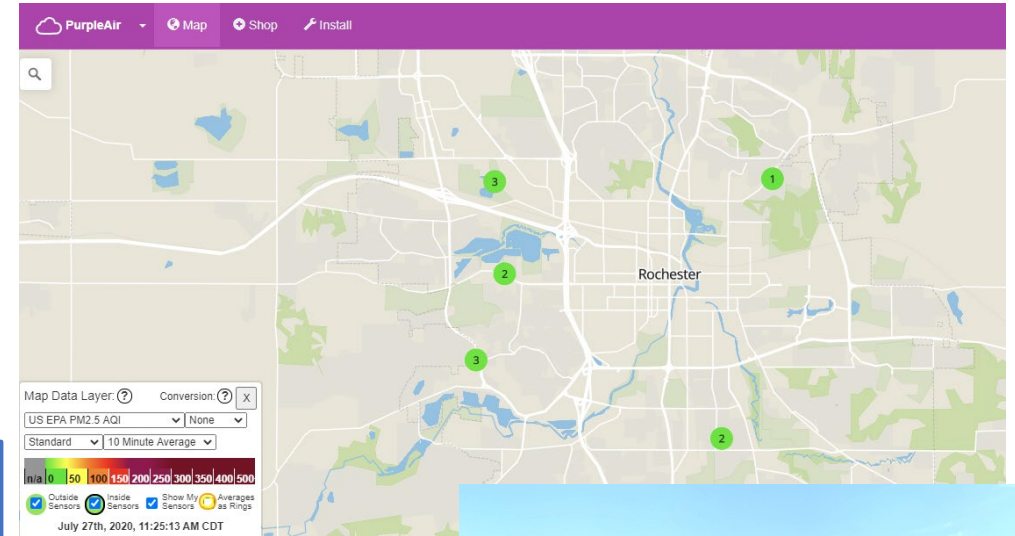
Figure 1. The Solid Waste Hierarchy prioritizes prevention (or reduction of waste), then reuse, recycling, organics recycling, WTE, and landfiling, in that order.



Community Leadership



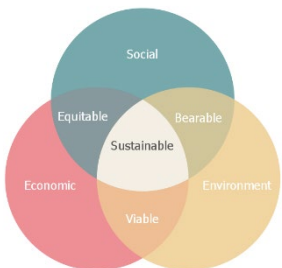
- ▶ Sustainability & Resiliency Task Force
- ▶ Air Quality Monitoring Project
 - ▶ [PurpleAir Map on Web](#)
- ▶ Bike Share Committee & Program
- ▶ Energy Benchmarking Program



Other Projects



- ▶ **Minnesota GreenCorps Host Site, 2020-2021**
 - **Partnering with Public Works**
- ▶ **Sustainability Webpage**
- ▶ **Sustainability Asset Map**
- ▶ **Food Access Assessment Planning**
- ▶ **LEED Green Associate, Staff Accreditation**





Thank You!

Further comments or questions, feel free to email:

Lauren Jensen, ljensen@rochestermn.gov

Kevin Bright, kevinbright@dmceda.org